

# City of Charleston 2015 Floods

“An episodic event that highlighted a chronic threat”



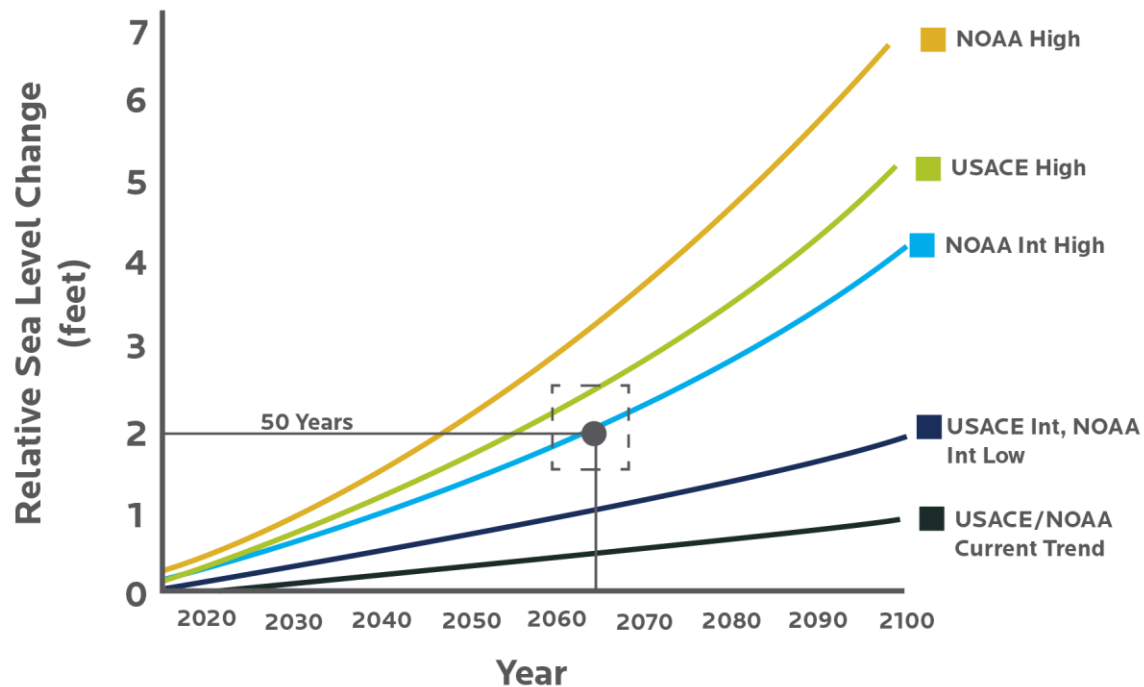
# City of Charleston 2015 Floods

## The Chronic Threat



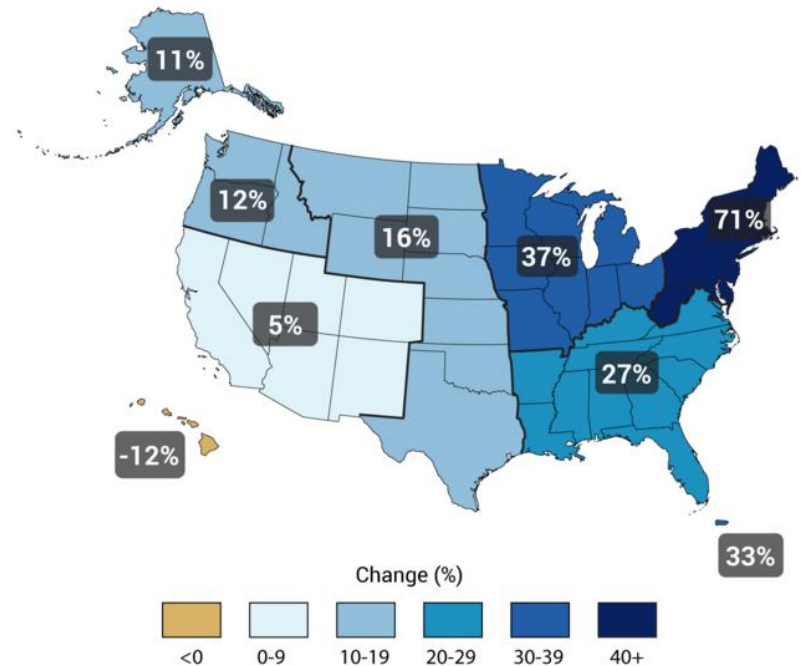
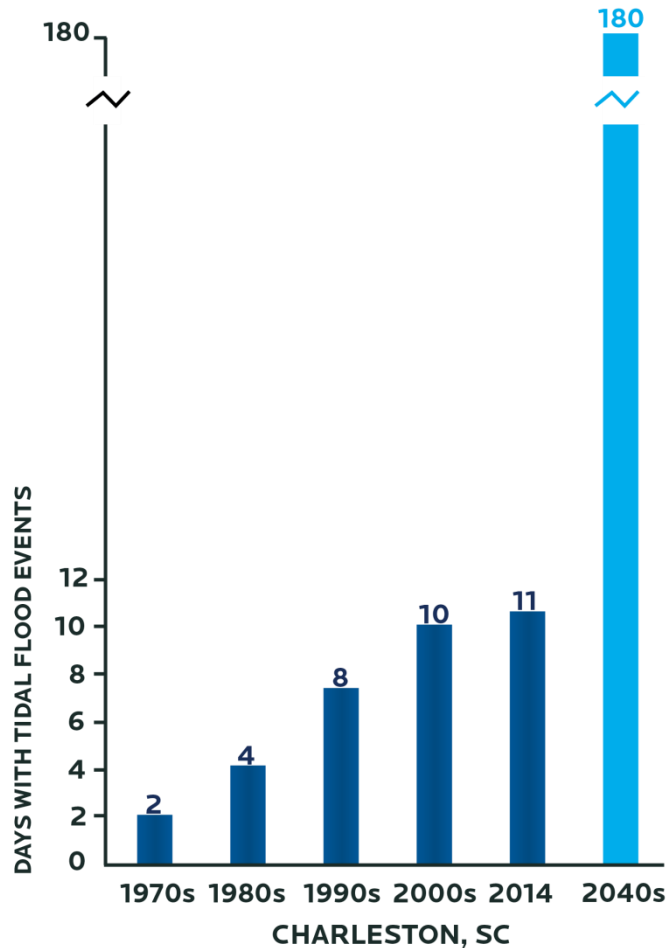
# City of Charleston 2015 Floods

## The Chronic Threat



# City of Charleston 2015 Floods

## The Chronic Threat

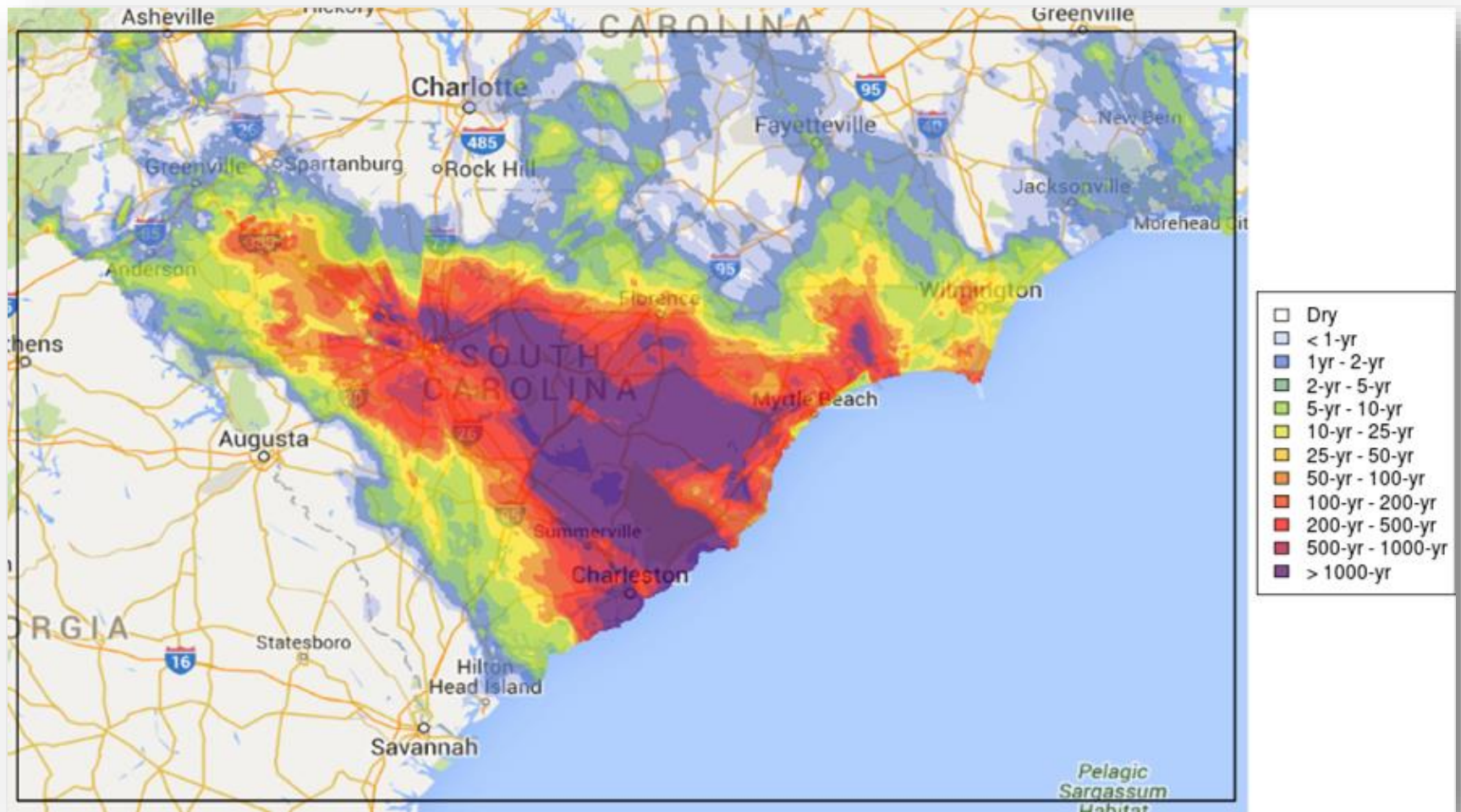






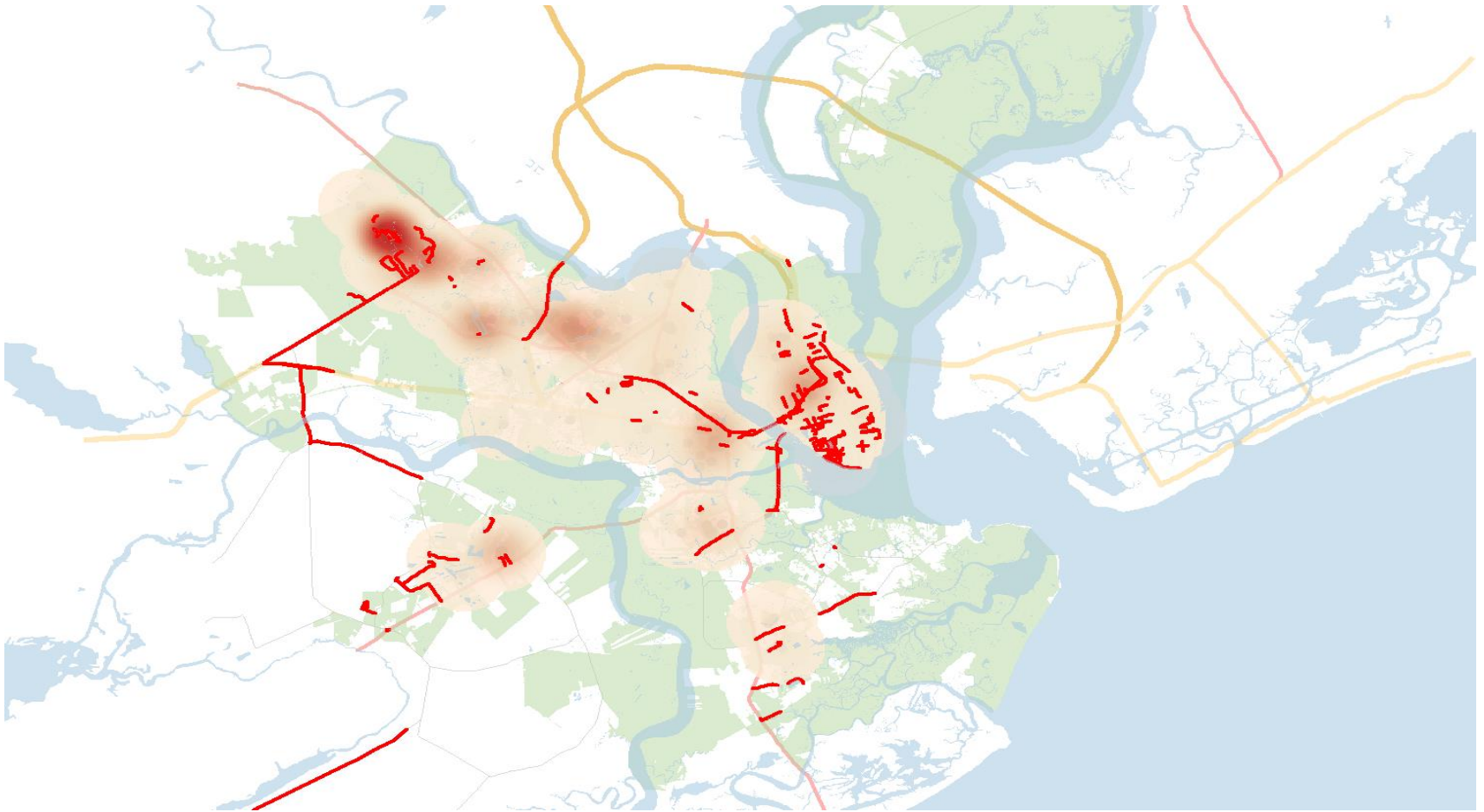
# City of Charleston 2015 Floods

## The Event



# City of Charleston 2015 Floods

## The Result



# City of Charleston 2015 Floods

## History of Collaboration

- College of Charleston Low Country Hazards Center
- University of South Carolina
- Worked with others in the SE US to create a Resilience Handbook
- Participated in regional DHS exercise focusing on resiliency of infrastructure from climate related events
- Participating as a pilot city in National Academies of Sciences Resilient America Roundtable
- City of Charleston Sea Level Rise Strategy

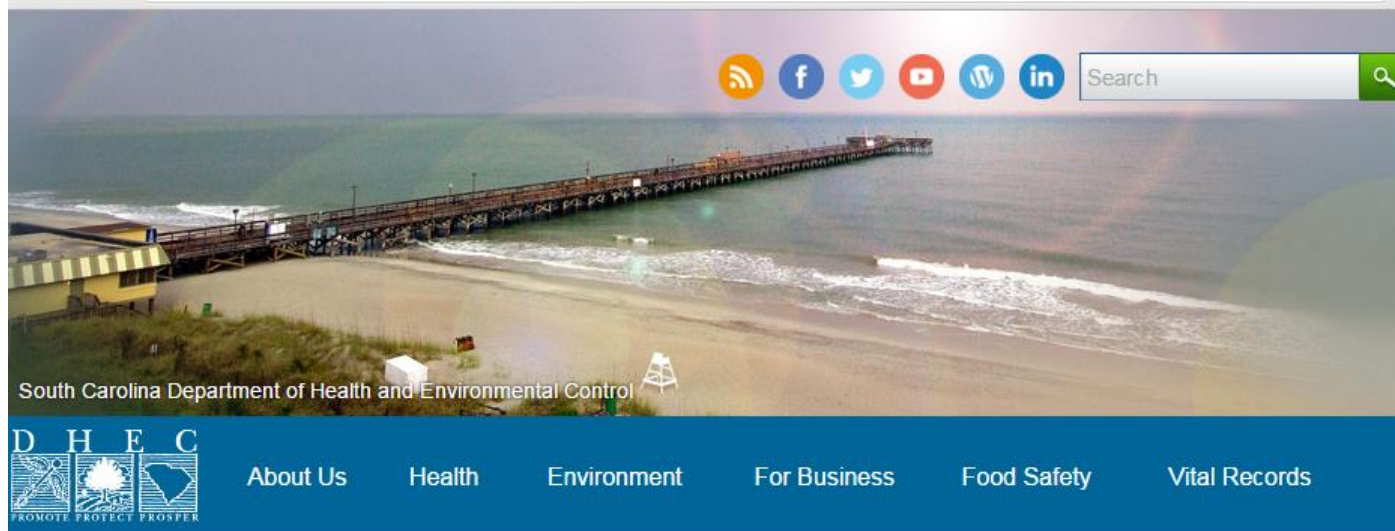




## A Guiding Principle



# City of Charleston 2015 Floods History of Collaboration



[DHEC](#) > [Environmen...](#) > [Water...](#) > [Coastal Ma...](#) > [Charleston Resilience Network](#)

## Charleston Resilience Network

### Mission

The Charleston Resilience Network (CRN) is a volunteer-based effort composed of public and private sector stakeholder organizations within the Charleston, South Carolina, metropolitan area that have a collective interest in the resilience of communities, critical infrastructure and socio-economic continuity to episodic natural disasters and chronic coastal hazards. The Charleston Resilience Network will work to foster a unified strategy and provide a forum to share science-based information, educate stakeholders and enhance long-term planning decisions that result in resilience.

### Resilience

# City of Charleston 2015 Flood Going Forward Together

- Community-Wide Symposium on 2015 Floods
- Zurich Foundation – Community Resilience
- NOAA Grant
- DHS Innovation Challenge?
- Rockefeller 100 RC - Chief Resilience Officer?
- Continue with National Academies